

Ceredigion: Change Detection Table: Final*Italics denotes amendments required for consistency rather than significant change*

1 Aspect Area UID & name	2 Change indicated by: OS data, Aerial photographs & Roads/Buildings	3 Complexity maps (segment density) & NDVI	4 Phase 1 & seasonal change	5 LPA questionnaire (NRW personnel) /feedback	6 Other resources	7 Fieldwork	8 Recommended LANDMAP amendment
CRDGNVS001 Cambrian Mountains (north) Windfarms					Rheidol windfarm, operational 8no. 45m to tips Cefn Croes windfarm, operational, 39no. 99m to tips (large)		GIS: two new polygons Survey: new record
CRDGNVS125 Coastal plateau (north)	a. Large hardstanding inland from Llanon, not apparent on aerials				b. Patches of broadleaf conversion on hillsides near Bow Street – may be seen from main road.	a. No significant impact b. Not noticeable or large enough areas to be significant. c. Llangwyrfon windfarm is conspicuous from B4576 and other parts of this aa	Survey: Amend summary and views to reflect views to Llangwyrfon windfarm.
CRDGNVS151 Plimlimon	Not apparent on aerials - shadow	Lots of less productive on open moor – may indicate change in vegetation		Sheep exclusion for a number of years			No amendments required – no significant changes.

		patterns/visual					
CRDGNVS174 New Quay	a. Holiday village roads upgraded. b. expansion of holiday accommodation in 2 places into 688, in east = increase/upgrade in holiday accommodation					Confirmed. Some holiday accommodation well hidden, others exposed, with views.	GIS: Boundary changes with 688 (b.) Survey: Amend summary, descriptions, views, trend, recommendations to reflect increase/upgrade in tourism.
CRDGNVS229 Dyfi grazing marsh				Dyfi Biosphere project		Not visually obvious	Survey: Amend summary, recommendations and trend to reflect gradual improvements to management from Dyfi Biosphere project
CRDGNVS283 Dyfi Dunes				Static caravan park at north end has expanded		Confirmed – exposed to wide views but not significant change	No amendments required - no significant change
CRDGNVS292 Teifi Valley sides (west)	Cardigan expanding into this area						GIS: Boundary change with 771 Survey: note boundary change
CRDGNVS310 Teifi tributary valleys	Not apparent on aerials	Less productive woodlands on west side					No amendments required – no significant change
CRDGNVS313 Cambrian Mts (south)	a. Shadow b. Not apparent on aerials	a. Lots of less productive land throughout (both areas)		b. Off-road abuse, Soar-y-Mynydd to Tyn'y Cornel route		b. Not permanent change	No amendments required – no significant changes.

CRDGNVS339 Teifi estuary dunes & saltmarshes	South Cardigan expanding into this aa. <i>Parts of this aa is mis-named /numbered – should be part of 525</i>						GIS: Boundary change with 771 <i>Boundary change with 525 to exclude all farmland</i> Survey: note boundary changes
CRDGNVS369 Dyfi saltmarshes	<i>Large area of saltmarsh extends into 522 – not recent change</i>						GIS: <i>Boundary change with 522</i> Survey: <i>note boundary change</i>
CRDGNVS437 Borth	Not apparent on aerials			Borth sea defense scheme		In progress. Conspicuous – cuts off view to sea	Survey: Amend summary, descriptions, views, trend, recommendations to reflect increase in need for sea defenses.
CRDGNVS466 Dyfi Estuary				Borth sea defense scheme		In progress – significant man- made changes to beach in southern part of this aa	Survey: Amend summary, descriptions, trend, recommendations to reflect need for sea defenses.
CRDGNVS500 Teifi Valley Bottom	Lampeter – new school expanded into this aa						GIS: Boundary change with 771 Survey: note boundary change
CRDGNVS508 Cambrian Mts (north)	a. Rheidol windfarm, near main A44 road b. Cefn Croes windfarm built, partly on former forest (983) New roads to Cefn Croes windfarm c. not clear on aerials	c. Quite a lot of less productive land throughout on central & south parts. d. Foel Fach does not show changes in		d. Land on Foel Fach owned by RSPB, above Eglwys Fach, has had stocking rates reduced over last few years – change from grassland with bracken, scattered scrub and trees to less grassland, inc.	a. Rheidol windfarm, operational 8no. 45m to tips b. Cefn Croes windfarm, operational, 39no. 99m to tips (large)	a. Rheidol windfarm conspicuous from main A44 and Bwlch Nant yr Arian visitor centre b. Cefn Croes windfarm not impacting on views from roads	GIS: New aa for two areas with windfarms (CRDGNVS001) Boundary change (in new aa) with 983 to include all cleared forest/windfarm. Survey:Note boundary changes. New aa to include windfarms throughout.

		productivity		bracken cover (too dense) and brambles in places. Implication for locally rare <i>Segelia atlantica</i> (lichen) which appears to have been lost from site.		or other readily accessible places, but only seen from afar. 8 separate and diverse areas in this aa. Need to sub-divide	
CRDGNVS513 Mynydd Bach	a. Roads to windfarm (windfarm built pre-2001) b. scramble track adjacent to windfarm				a. Llangwryfon windfarm, operational, 11no. 66m tips	a. Windfarm conspicuous from nearby areas to north and west including aa 125 b. Not permanent change-becoming indiscernable	Survey: Check/amend summary, views, trend to include windfarm. No amendments required
CRDGNVS522 Dyfi intertidal	<i>Large area is saltmarsh – not recent</i>						GIS: <i>Boundary change with 369</i> Survey: <i>note boundary change</i>
CRDGNVS525 Cardigan Bay coastal plateau	a. Cardigan expanding into this aa b. West Wales airport new/re-built developments plus longer runway and new road <i>Large areas of adjacent 339 should be in this aa</i>					b. Airport is unused. Not significant impact.	GIS: Boundary change with 771 (a.) <i>Remove boundaries with 339 to include in this aa</i> Survey: note boundary change
CRDGNVS527 Leri Valley	Not apparent on aerials				Patches of broadleaf conversion near Talybont	Not noticeable change	No amendments required – no significant changes.
CRDGNVS546	a. Expansion of			b. Llandysul bypass.		a. not much new	Survey: Amend

Talgarreg Plateau	Groesfford Business Park. b. new Llandysul bypass			c. Synod Inn to Llandysul road scheme		development. b. Conspicuous new interchange and change in views. c. On-line improvements – impact limited.	summary, descriptions, views, trend to reflect road improvements.
CRDGNVS558 Penrhyn-coch surrounds	Windfarm built pre-2001				Operational windfarm, 19no. 56m to tips	Conspicuous from A487 and seen from much of Dyfi estuary land	Survey: Check/amend summary and views
CRDGNVS588 Lower Teifi valley	a. Lampeter housing expanding into this aa b. Llandysul bypass			b. Llandysul bypass		b. Bypass cuts steeply across valley, intrusive views also from adjacent aa.in Carmarthenshire	GIS: Boundary change with 827 (a.) Survey: Amend summary, views, trend to reflect impact of bypass. (b.)
CRDGNVS597 Afon Ceulan	Housing expansion at Talybont, by church					Not significant	No amendments required – no significant changes.
CRDGNVS644 Aberystwyth	Lots new development, much on valley floor					Significantly different character to approaches from east	Survey: Amend summary, descriptions, trend, recommendations to reflect increase in developments.
CRDGNVS688 Coastal valleys	New Quay holiday accommodation expanding into this aa in 2 places						GIS: Boundary changes with 174 Survey: note boundary changes
CRDGNVS707 Plantation north of A44					a. Rheidol windfarm may be conspicuous from this aa b. Patches of	a. Windfarm conspicuous from Bwyh Nant-yr-Arian visitor centre.	Survey: Check/amend summary and views to include windfarm in adjacent aa.

					broadleaf conversion on slopes around Goginam-fach	b. Not conspicuous	
CRDGNVS725 Cardigan Bay cliffs	Shadow	Stretches of more productive, south of Cwmtedu					No amendments required – no significant changes.
CRDGNVS729 Llwernog Valley						Rheidol windfarm conspicuous from this aa	Survey: Check/amend summary and views to reflect impact of windfarm in adjacent aa. No amendment required
CRDGNVS735 Plantation Tywi Forest	Not clear on aerials				Various patches of broadleaf conversion – may be views from reservoir side	Not noticeable from reservoir side.	No amendments required – no significant changes.
CRDGNVS768 Aberporth MOD				Drone testing		No changes apparent	No amendments required – no significant changes.
CRDGNVS771 Cardigan	Expanding into 525,292,339						GIS: Boundary changes with 525,292,339 Survey: note boundary changes
CRDGNVS795 Talgarreg plateau	<i>This aa is mis-named (same as 546)</i>				Broadleaf conversion adjacent to main road n. of Lampeter	Not conspicuous from main road.	<i>GIS and survey: re-name this aa 'Llwyn-y-groes Plateau'</i>
CRDGNVS827 Lampeter	a. housing, expansion, north b. School expansion to west						GIS: Boundary changes with 588 & 828 (a.) and 500 (b.) Survey: note boundary changes

CRDGNVS828 Afon Dulas	Lampeter expanding into this aa						GIS: Boundary change with 827 Survey: note boundary changes
CRDGNVS867 Tre Taliesin	a. Growth of woodlands apparent. b. several farm complex expansions	a. More productive, including correlation with broadleaf		b. Talybont/ Pentrebach agricultural sheds x 4 big, visual, unscreened = detractors	a. Various large patches of broadleaf conversion	a. Changes to woodlands not conspicuous. b. sheds noticable	Survey: Amend summary, description, views, trend, recommendations to reflect gradual improvements to woodlands and increase in detractive developments.
CRDGNVS901 Plantation Nant-y-Moch reservoir	Not apparent on aerals				Various patches of broadleaf conversion	Not visible	No amendments required – no significant changes.
CRDGNVS911 Aeron valley	Bike track on south side near Dolau Aeron					Track is not conspicuous and no accompanying development	No amendments required – no significant changes.
CRDGNVS955 Aberporth	Large housing development within						Survey: Amend summary and trend to reflect increase in development.
CRDGNVS983	Cefn Croes windfarm built on cleared part of this aa						GIS: Boundary change with 508 to exclude felled area/windfarm. Survey: Amend summary to reflect change/adjacent windfarm

Ceredigion: Stage 2 Change Detection Figures

CRDGNVS174 : Holiday accommodation at New Quay



Boundary changes



2001



2010

CRDGNVS369/522: Dyfi saltmarshes



Boundary change to include well-established marsh area

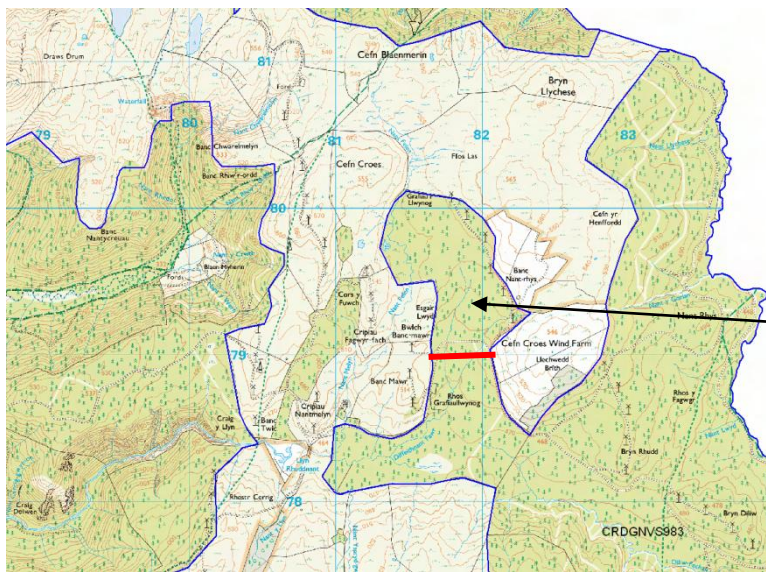
CRDGNVS508: Cefn Croes windfarm



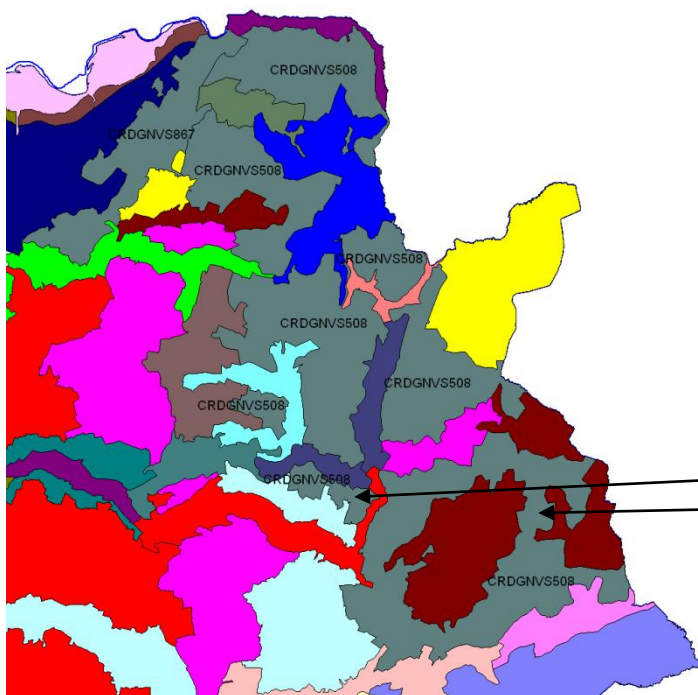
2001



2010

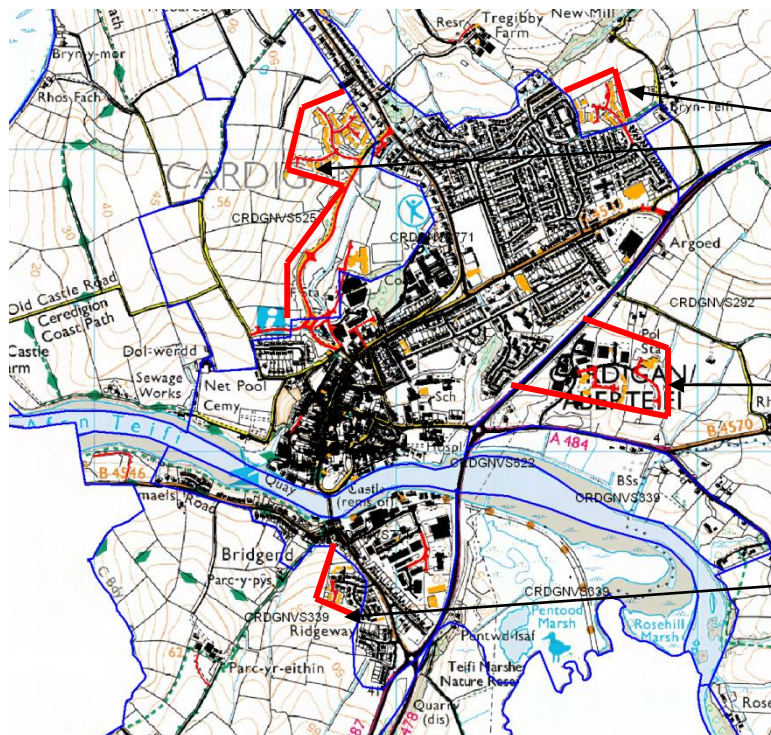


Boundary change to exclude windfarm/cleared forestry from 983



Two areas of 508 with windfarms to form new aspect area

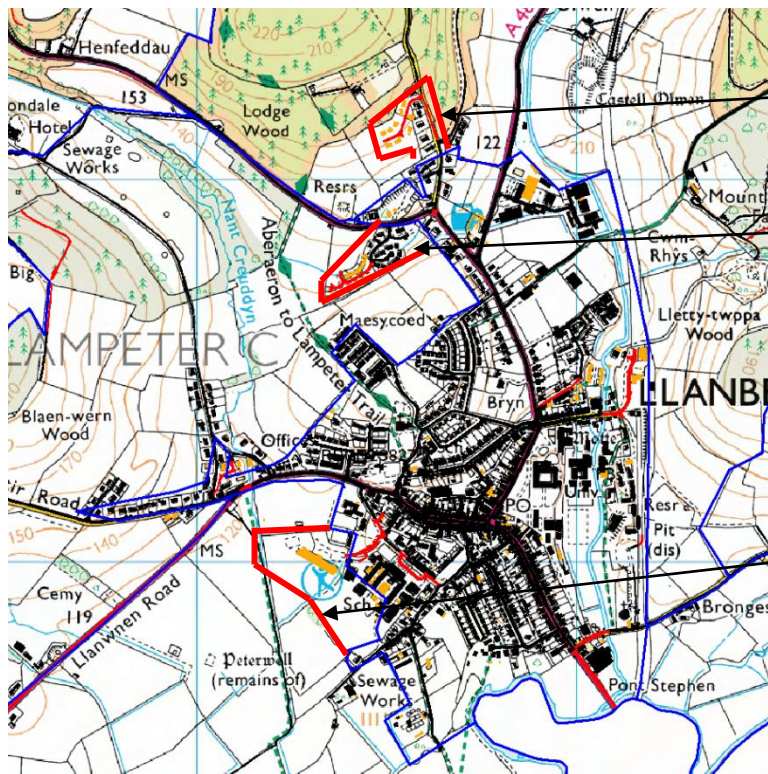
An aerial photograph showing a river confluence. A wide, dark river flows from the bottom left towards the center, where it meets a narrower river flowing from the top right. The surrounding landscape is a patchwork of green and brown fields, with a dense urban area visible in the center. A red line is overlaid on the image, tracing the banks of the rivers and enclosing several areas of land, including parts of the urban area and surrounding fields.



Boundary change with 292

Boundary change with 339

CRDGNVS827: Lampeter expansion



Boundary change with 828

Boundary change with 588

Boundary change with 500

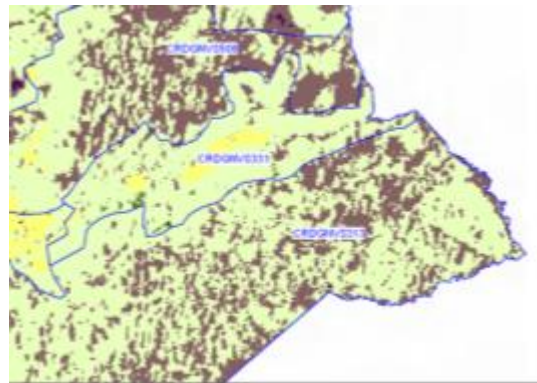
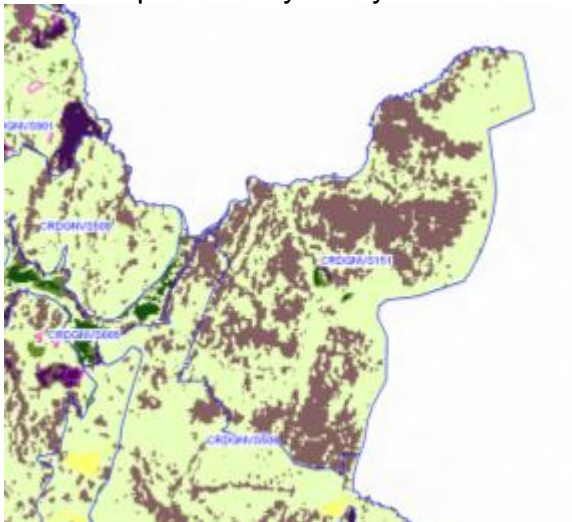
CRDGNVS795: Llandysul bypass



CRDGNVS867: Forestry changes, including conversion to broadleaf woodland around Talybont and Tre'r-ddol on A487



Reduced productivity at Plynlimon and south of Cwmystwyth



CRDGNVS513: scrambling track



CRDGNVS911: bike track



CRDGNVS525: West Wales airport



2001



2010

